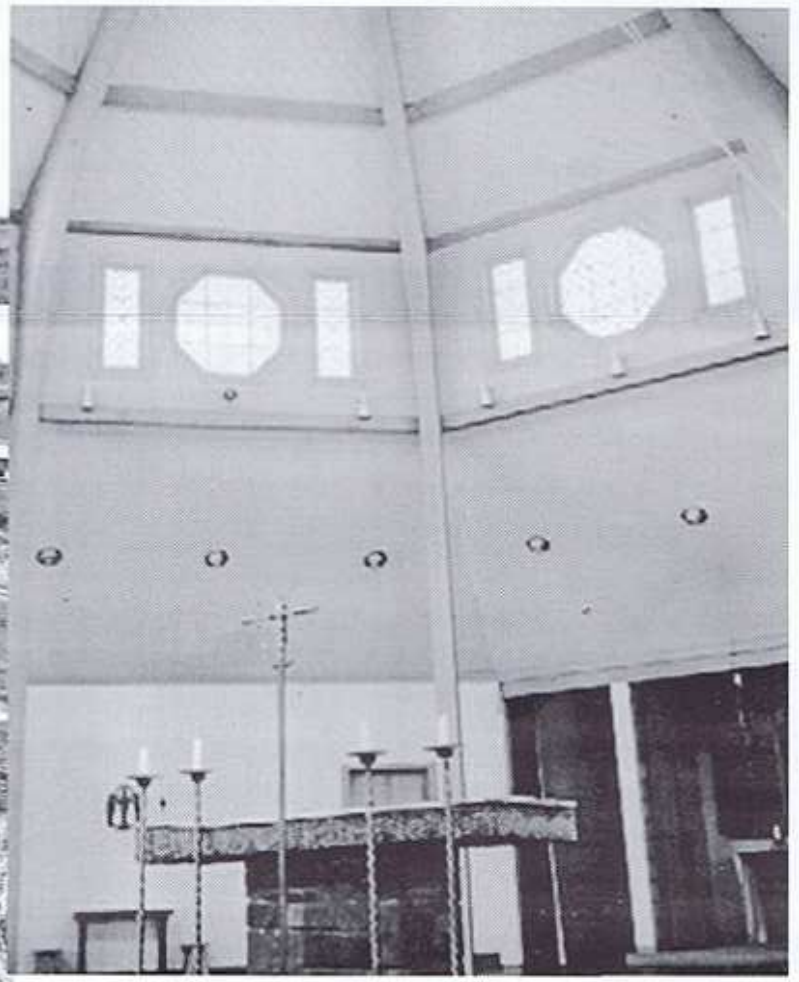
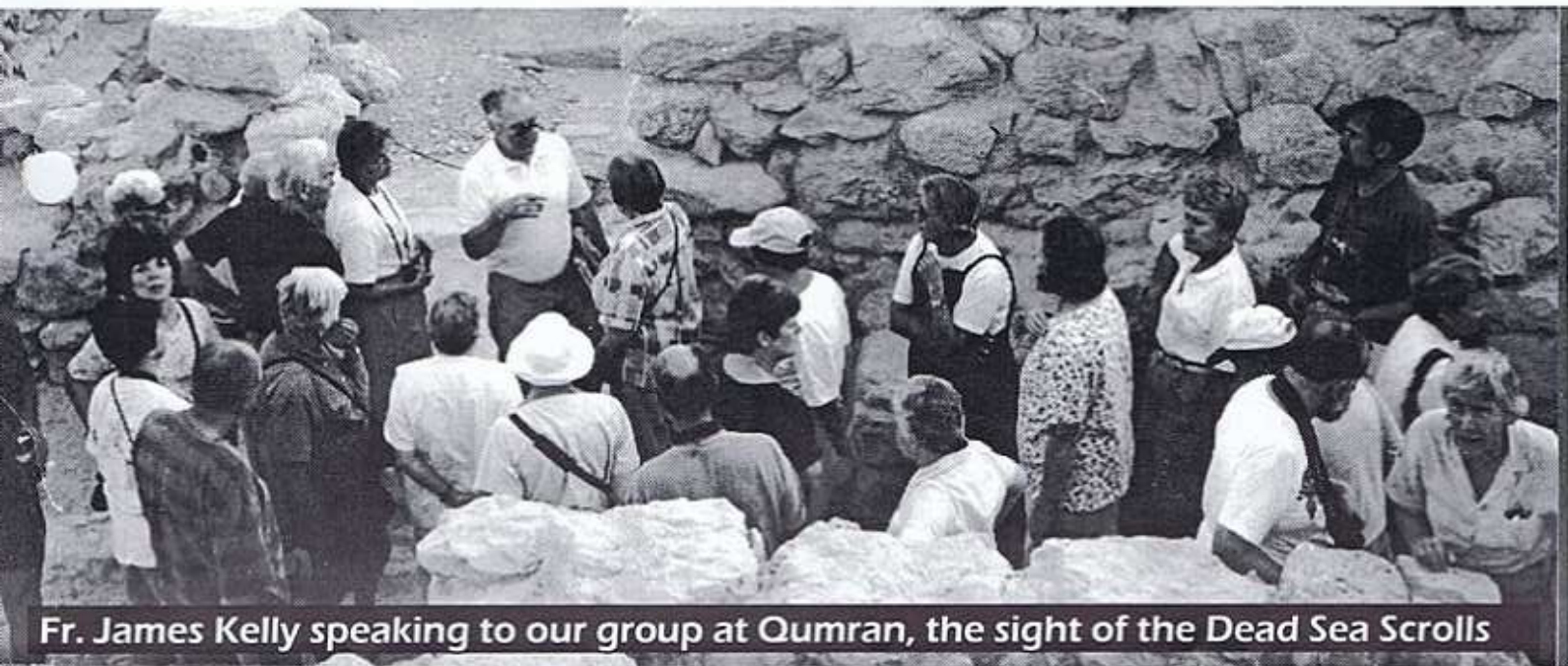




Since we are asking for help to repair the present Chapel, you should see its original design. A simple octagon bounded by the present 'sanctuary walls'. The 'naves' were added 10 yrs later due to need for more space. Note the barren landscape. Recognize any of the monks?



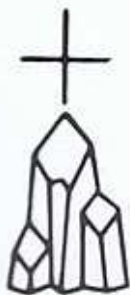


Fr. James Kelly speaking to our group at Qumran, the sight of the Dead Sea Scrolls

Mount Saviour Pine City, N.Y. 14871

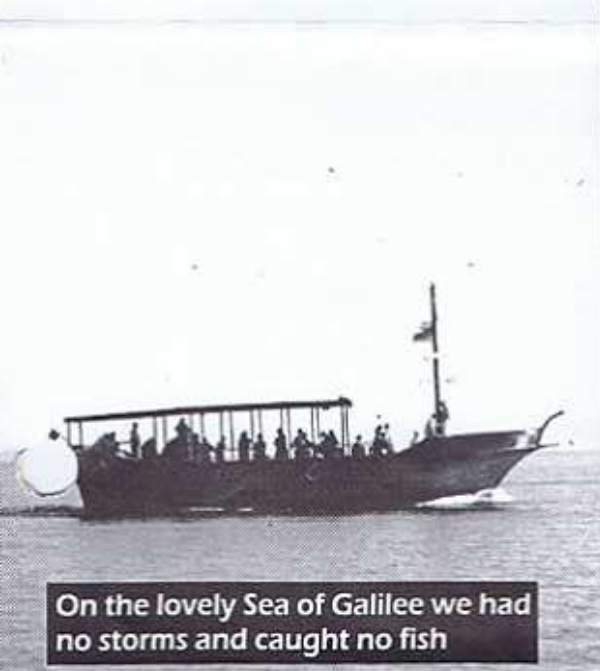
Non-Profit Org.
U.S. Postage
PAID
Pine City, NY
Permit No. 5

Chronicle



LENT 1999

No. 84



On the lovely Sea of Galilee we had no storms and caught no fish



With other pilgrims we prayed at the Western Wall in Jerusalem



The present Chapel being re-roofed, re-painted and re-clerestory windowed



The present community. Brs. David, Sebastian & Raphael are missing.

HAPPY CAMPERS ON OUR PILGRIMAGE TO GREECE AND THE HOLY LAND



We have been asked to have more pictures and fewer words in the chronicle. Let these photos be our tribute to all our old and new friends among the laity, religious and priests. May these few co-workers represent all of you, and the pleasure we have in your company, and the importance of our working together to bring about the Kingdom of God on earth as it is in heaven - somewhat!

The Adult Study Week June 6-10 will consider Discipleship & the Cross. We also have some space for 21-35 yr old men for the 10th annual Summer Program, 1 July - August.

Madeleva will have super major spine surgery on 9 February. No meals at St. Gertrude's Guest House until the end of May except for those who already have reservations. No additional guests at St. Gertrude's until further notice.

Remember us in prayer, remember our needs as we remember you. Mass offerings welcome.